



Urbanites rejoice! At last, a design that knows you better than you know yourself; a design that sums up everything you love about inner-city living.

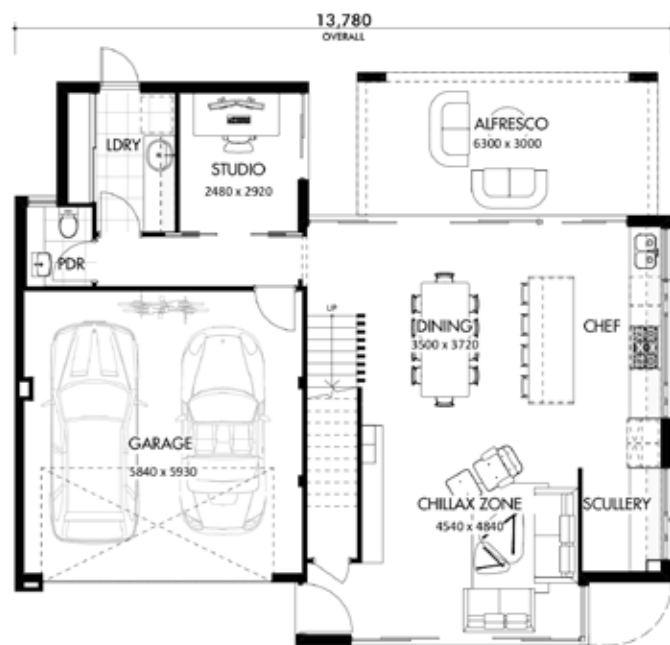
From sunset drinks on the rooftop to watching the world go by from the comfort of your own chillax zone. Twist it, turn it, this one's an easy fit, whichever way you look at it.

CABBAGE PATCH KID

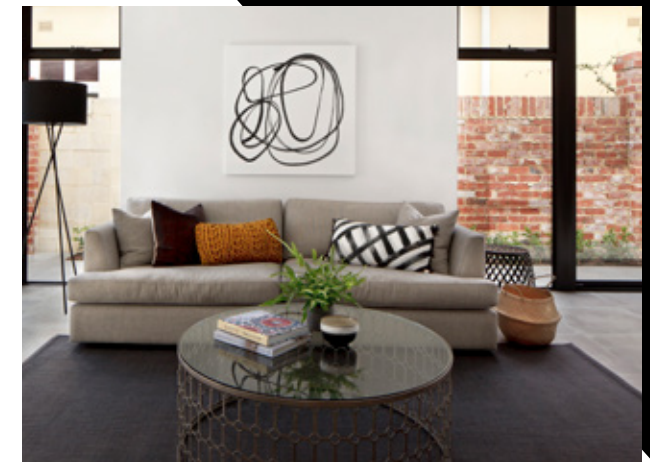
3x  | 2x  | 2x  |  262m<sup>2</sup> |  15m



11,820  
OVERALL

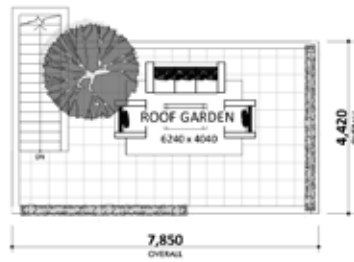


12,020  
OVERALL



CABBAGE PATCH KID WITH TERRACE

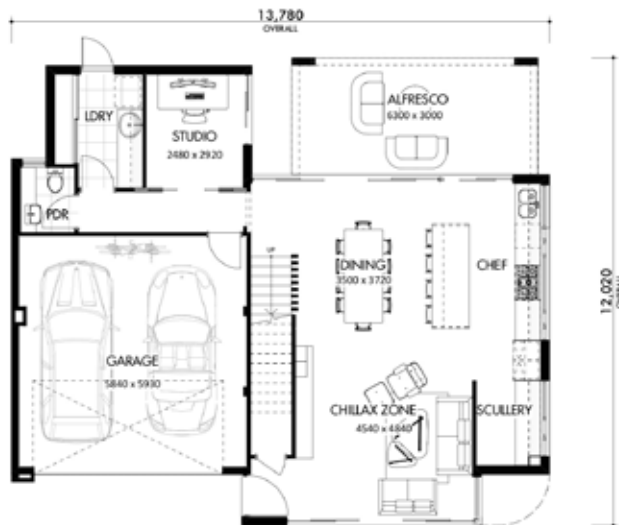
3x  | 2x  | 2x  |  293.2m<sup>2</sup> |  15m



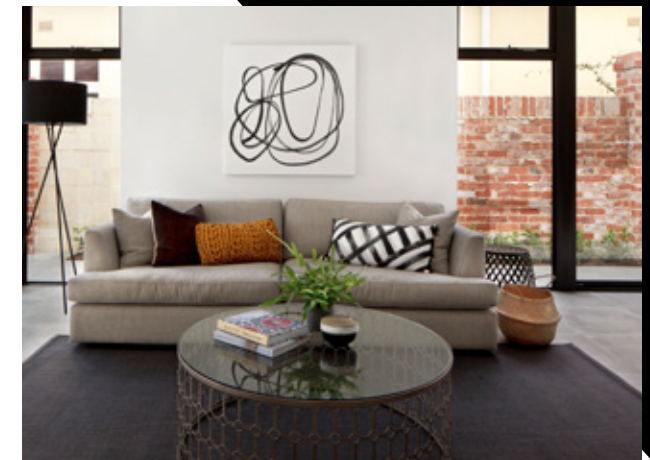
ROOF TERRACE



UPPER FLOOR



GROUND FLOOR



There's a new home for  
every ~~lifestyle~~

*attitude*

MEMBER OF THE  
**JWHGROUP**  
PTV LTD  
AN ENTIRELY WESTERN AUSTRALIAN, FAMILY-OWNED ORGANISATION.

We are proud to be a part of JWH Group. One of Western Australia's largest building group and a top-tier project builder in size nationally. With an array of reputable and successful companies, offices across Australia as well as experienced and dedicated staff. The JWH Group are well established as a cornerstone of the Australian building industry. So, trust when you're building your new home with Residential Attitudes, you have the backing of JWH Group.

[Residentialattitudes.com.au](http://Residentialattitudes.com.au)

Phone: (08) 9202 9000

BC11420