



3x  | 2x  | 2x 

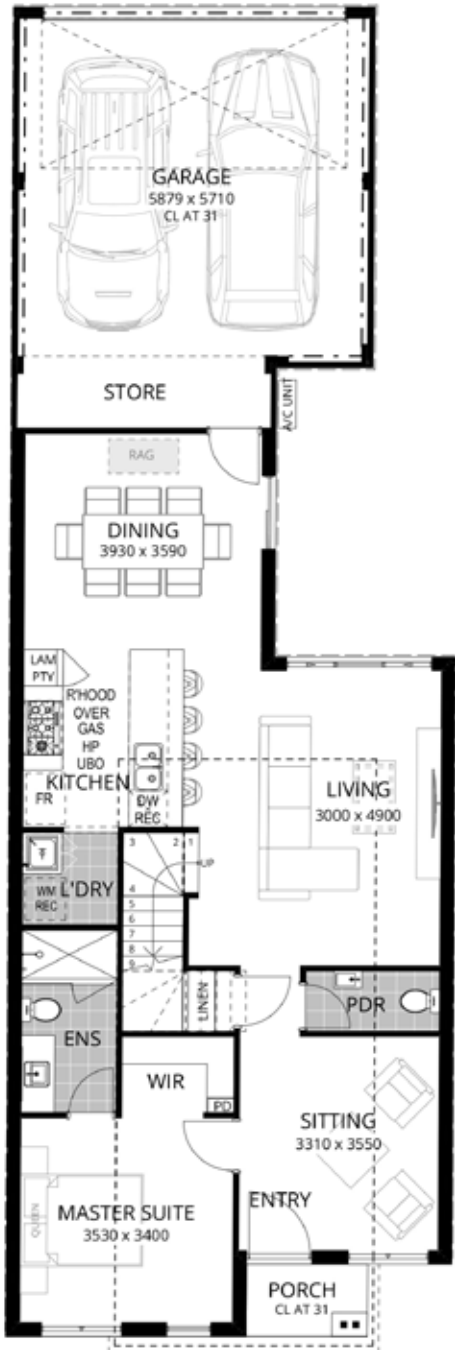
Images used are for illustration purposes only

Welcome to Check Mate, where every square inch is a strategic move in the game of cozy living.

This home's got an intelligent compact design that's so savvy, it makes chess grandmasters jealous. The rear-loaded garage? Keeps the King and Queen of cars safe.

CHECK MATE

3x  | 2x  | 2x  |  183m<sup>2</sup> |  7.5m



GROUND FLOOR



UPPER FLOOR



There's a new home for  
every ~~lifestyle~~

*attitude*

MEMBER OF THE  
**JWHGROUP**  
PTV LTD  
AN ENTIRELY WESTERN AUSTRALIAN, FAMILY-OWNED ORGANISATION.

We are proud to be a part of JWH Group. One of Western Australia's largest building group and a top-tier project builder in size nationally. With an array of reputable and successful companies, offices across Australia as well as experienced and dedicated staff. The JWH Group are well established as a cornerstone of the Australian building industry. So, trust when you're building your new home with Residential Attitudes, you have the backing of JWH Group.

[Residentialattitudes.com.au](http://Residentialattitudes.com.au)

Phone: (08) 9202 9000

BC11420