



3x  | 2x  | 2x 

Images used are for illustration purposes only

The concept of an urban oasis is to create a space where people can take a break, relax, connect with nature, and experience a moment of calm.

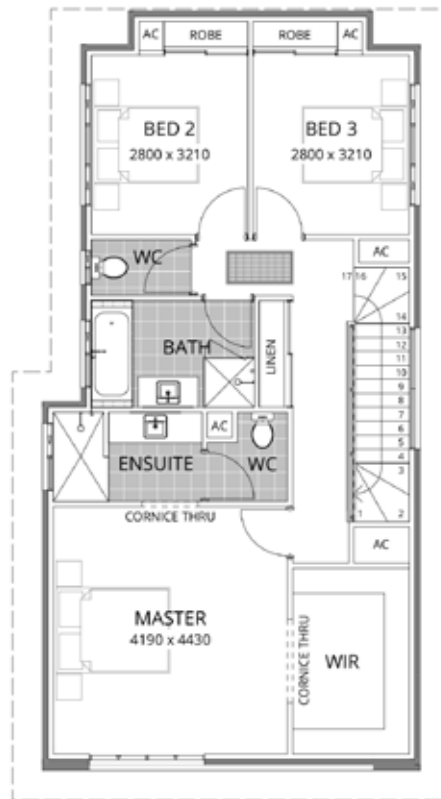
With this intelligent family home designed for medium density blocks, you can find your serenity amidst life's hustle and bustle.

URBAN OASIS

3x  | 2x  | 2x  |  249m² |  10m



GROUND FLOOR



UPPER FLOOR



There's a new home for
every ~~lifestyle~~

attitude

MEMBER OF THE
JWHGROUP
PTV LTD
AN ENTIRELY WESTERN AUSTRALIAN, FAMILY-OWNED ORGANISATION.

We are proud to be a part of JWH Group. One of Western Australia's largest building group and a top-tier project builder in size nationally. With an array of reputable and successful companies, offices across Australia as well as experienced and dedicated staff. The JWH Group are well established as a cornerstone of the Australian building industry. So, trust when you're building your new home with Residential Attitudes, you have the backing of JWH Group.

[Residentialattitudes.com.au](https://residentialattitudes.com.au)

Phone: (08) 9202 9000

BC11420